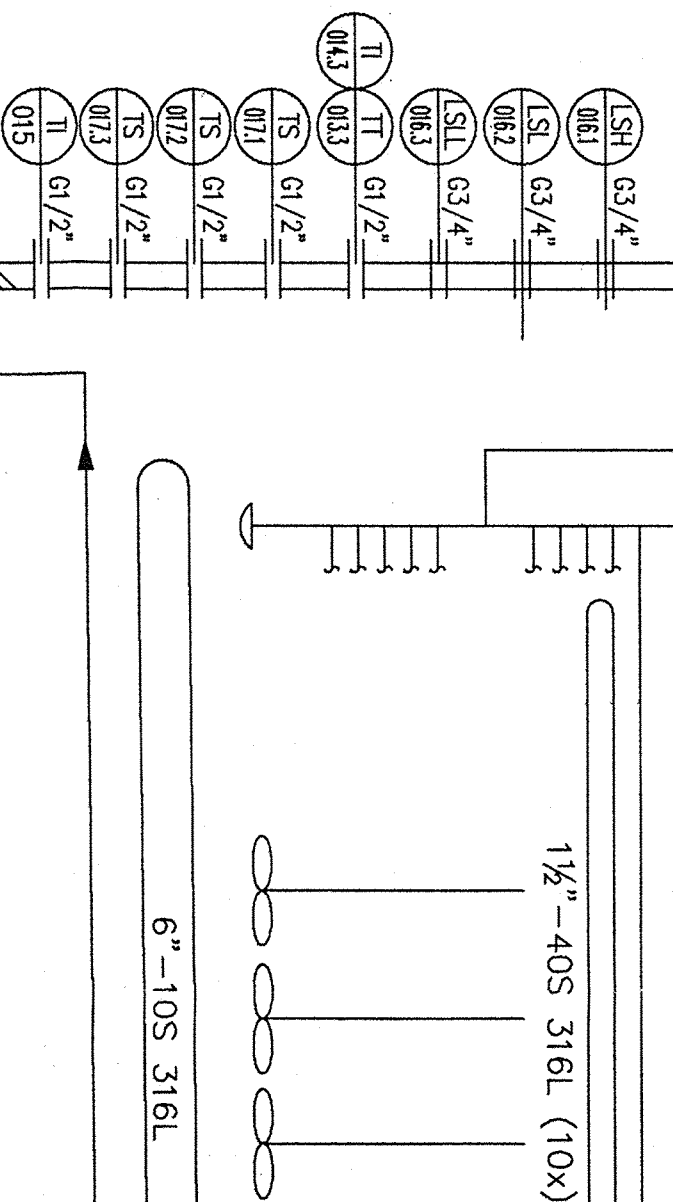


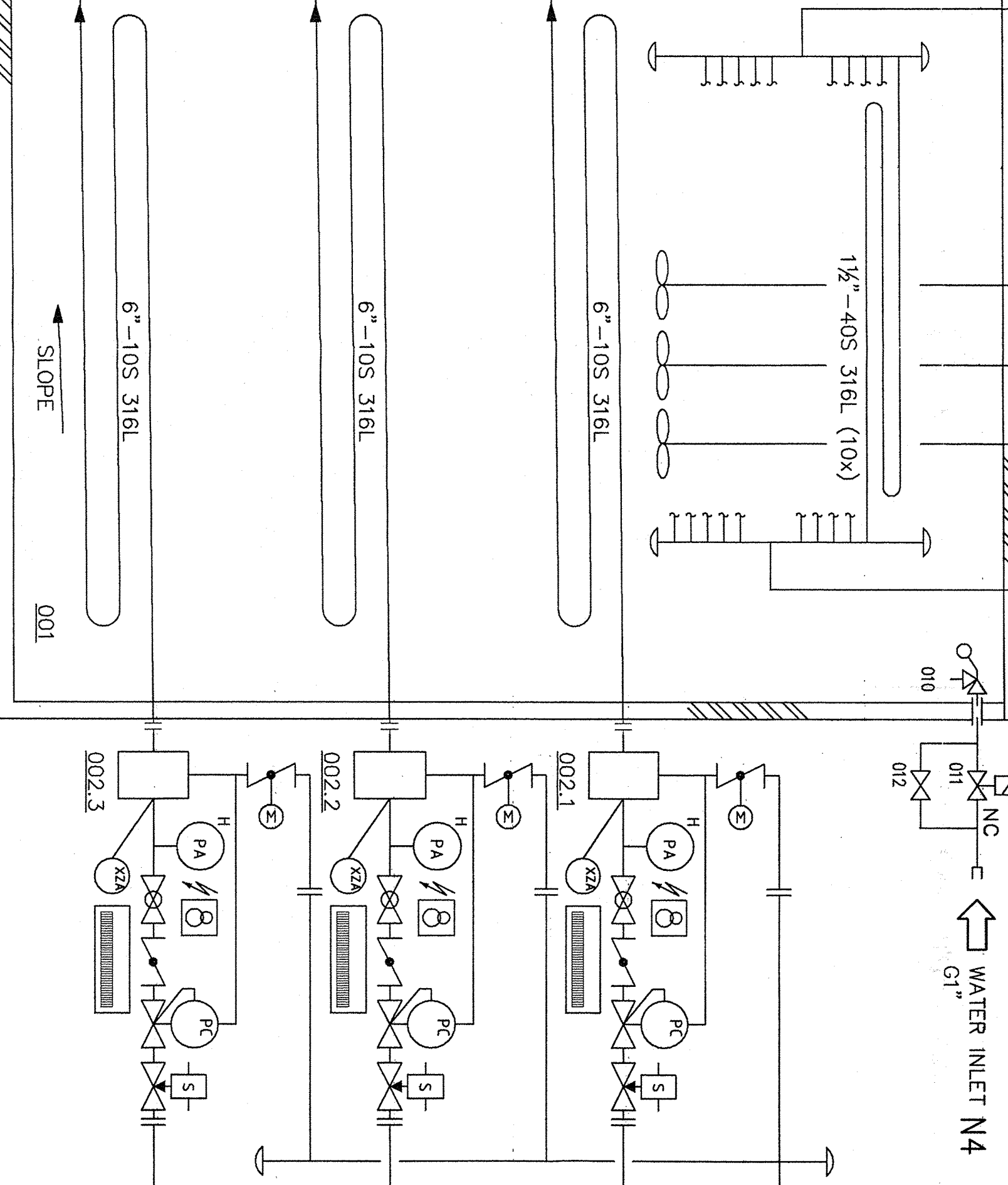
N7
EXHAUST

N6
OVERFLOW/VENT
DN80 / PN16



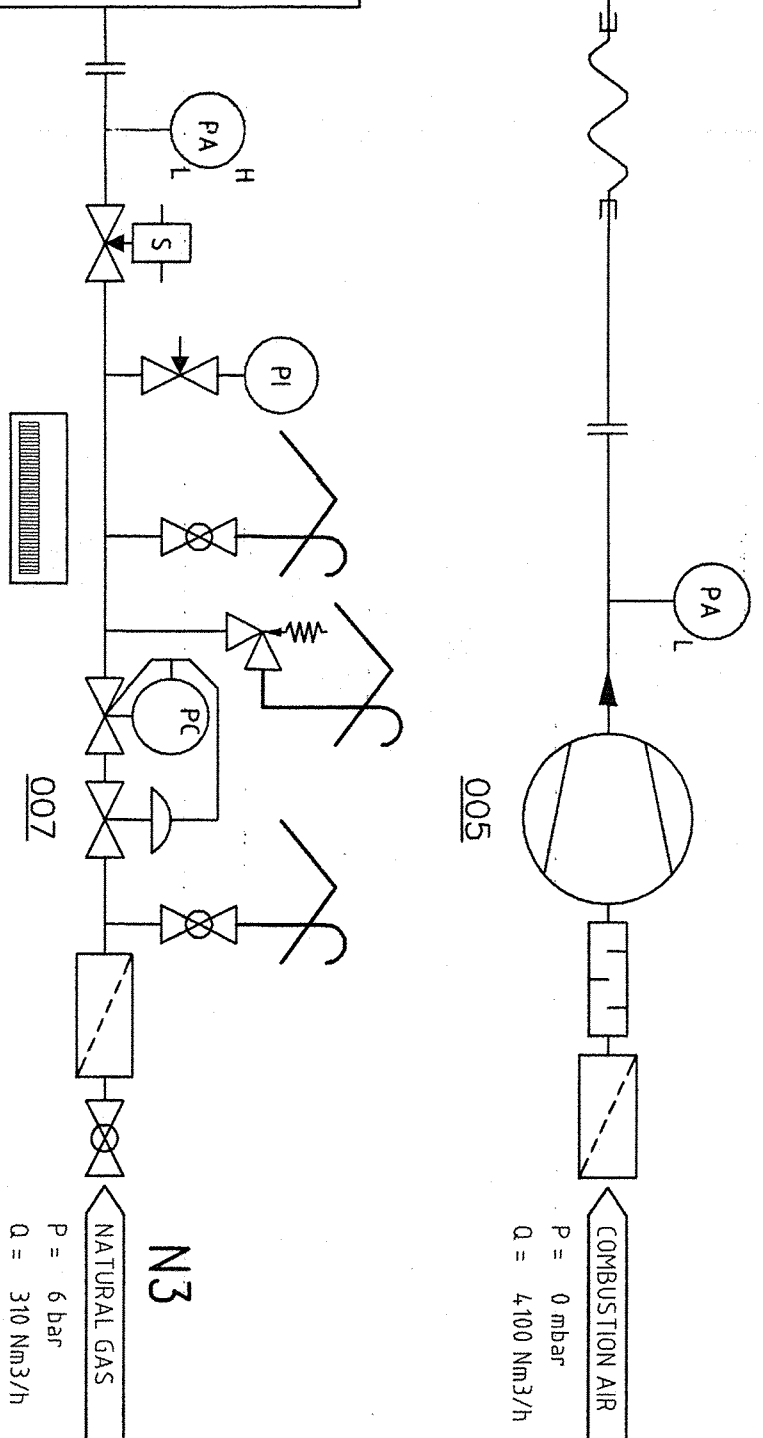
N5 WATER OUTLET/DRAIN
DN50/PN16
MAX. 60°C

N8
G1/2\"/>



N4
WATER INLET
G1\"/>

N1
GAS INLET
DN80/PN40
-196°C



NOZZLE CONNECTIONS

| POS. | DESCRIPTION | DN | REMARKS |
|------|-------------------------|--------|--------------|
| N1 | LIQUID NITROGEN INLET | DN80 | PN40-DIN2635 |
| N2 | GASEOUS NITROGEN OUTLET | DN150 | PN40-DIN2635 |
| N3 | NATURAL GAS INLET | DN50 | PN16-DIN2633 |
| N4 | WATER INLET | 1" BSP | - |
| N5 | WATER OUTLET/DRAIN (2x) | DN50 | PN16-DIN2633 |
| N6 | OVERFLOW / VENT | DN80 | PN16-DIN2633 |
| N7 | BURNER EXHAUST | 10" | PN10-DIN2576 |
| N8 | CONDENSATE DRAIN | 1" BSP | - |

| | | | | | | | |
|---------------------|--|--------------------|-----------|-----------------|------------------------|------------|---------|
| TAG NR. | | 001 | 002.1/2/3 | 003 | 004.1/2/3 | 005 | 006 |
| DESCRIPTION | | VAPORISER TANK | NO BURNER | CONTROL CABINET | MIXER | VENTILATOR | CHIMNEY |
| MODEL | | CRYONORM | L106 | | FMD 1,5 | | |
| CAPACITY | | ±18 m ³ | 950 kW | | 4100 m ³ /h | | |
| DIMENSIONS | | 10.000x1.500 | | 1200x1000x300 | | | |
| HEIGHT | | 1474 | | 750 | | | |
| PRESS. OPER./DESIGN | | ATM | | | | | |
| TEMP. OPER./DESIGN | | 0-80 | | | | | |
| VOLTAGE | | | | 230/400V-50Hz | 400V-50Hz | | |
| (MOTOR)CAPACITY | | kW | | 1,5 | 18,5 | | |
| MOTOR SPEED | | rpm | | 750 | 1500 | | |

| | | |
|---|--|----------------|
| WATERBATH VAPORISER 16.000 Nm ³ /h | | SCALE: NA |
| P&ID | | DATE: 24-05-04 |
| DRAWN: RSB | | CHECKED: J.B. |
| SEVERAL MODIFICATIONS | | DATE: 24-06-04 |
| REV. DESCRIPTION | | DATE |
| B | | M.K. |
| A | | J.B. |
| REV. DESCRIPTION | | DATE |

| | | |
|------------------------|--|------------------------|
| CRYONORM BY | | 2401 LH ALPHEN A/D RAU |
| THE NETHERLANDS | | TEL. +31 (0)172-418800 |
| FAX. +31 (0)172-418819 | | WWW.CRYONORM.NL |
| REPLACES: CN4518-2 | | COPYRIGHT CRYONORM BY |